

29 **Start** **MIDDLE ANNA:**  
*(knocking)*  
Do you want to build a snow-man?

32  
Or ride our bike a-round the halls?

34  
I think some com-pa-ny is o-ver-due, I've star-ted

36  
*(gesturing to painting of Joan of Arc)*  
talk-ing to the pic-tures on the walls. Hang in there,

38



Joan. It gets a lit - tle lone - ly, all these

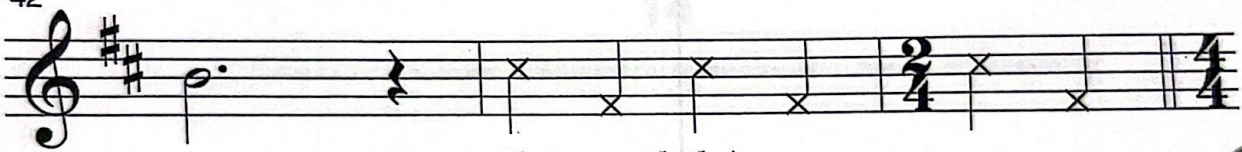
40



emp-ty rooms. Just watch-ing the hours tick

End

42



by.

(tongue clicks)